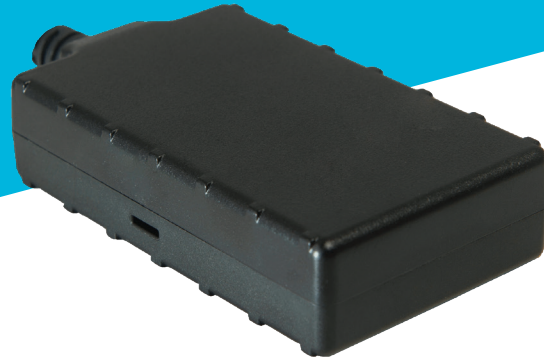


# LMU-200™

## Economical GPS Tracking Unit

Cal/Amp®



The LMU-200 is an economical, full-featured vehicle tracking product designed for covert and reliable installation in automobiles. The LMU-200 is an ideal solution for stolen vehicle, vehicle finance, auto rental and other automotive track and trace applications.

### Experience The Advantage

- 12/24V vehicle operation
- High sensitivity GPS
- Built-in antenna for easy installation
- Built-in harness
- Power management sleep modes
- 2,000 buffered message logs
- Up to 2 inputs and 2 outputs
- Optional backup battery
- Optional 3-axis accelerometer for motion, tilt and impact detection
- Optional 1-Wire® interface for temperature sense and driver ID
- 10 geo-fence capability
- Over-the-air update capability for configuration and firmware

### Competitive Price, Competitive Technology, Competitive Edge

The LMU-200 high-value tracking unit from CalAmp features a small footprint superior GPS performance, an optional internal 200mAh back-up battery, ultra low power sleep modes, 3-axis accelerometer for motion sense, and up to four Inputs/Outputs (I/O). The LMU-200 is a complete vehicle tracking and communications device incorporating next-generation, super-sensitive GPS technology on cellular networks for installation in any 12/24 volt mobile vehicle. Internal antennas for both cellular and GPS eliminate the need for wired antennas and make the LMU-200 mountable virtually anywhere in the vehicle for easy, inexpensive installations. Messages are transported across the cellular network using enhanced SMS or UDP messaging providing a reliable communication link between the device and your application servers. The LMU-200 is designed to dramatically reduce cost of ownership, power and size while providing excellent field reliability.

### Flexibility

The LMU-200 employs CalAmp's advanced industry leading on-board alert engine, PEG™ (Programmable Event Generator) to monitor external conditions and support customer-defined exception-based rules to meet your application requirements. PEG monitors the vehicle environment and responds instantaneously to pre-defined threshold conditions related to time, date, motion, location, geo-zone, input and other event combinations. This behavior can be programmed by CalAmp before shipment, at a customer's facility, or over-the-air once the unit has been fielded.

### Over-The-Air Serviceability

THE LMU-200 also leverages CalAmp's management and maintenance system, PULS™ (Programming, Updates, and Logistics System), for over-the-air configuration parameters, PEG rules and firmware. This out-of-the-box hands free configuration and automatic post-installation upgrades can monitor unit health status across your fleets to identify issues before they become expensive problems.

# LMU-200 Specifications

## General

Data Modes Location Technology	UDP Packet data and SMS
Operating Voltage	56 channel GPS 12 and 24 volt vehicle systems

## GPS

Location Technology	GPS
Tracking Sensitivity	-156 dBm
Acquisition Sensitivity	-144 dBm
Cold Start TTFF	30 sec
Hot Start TTFF	1 sec
Location Accuracy	2.5m
Location Update Rate	1Hz
AGPS / Location assistance capable	

## Cellular

Data Support	UDP, SMS
Dual-Band	850/1900MHz
Output Power	850 24dBm 1900 23dBm

## Comprehensive I/O

Digital Inputs	Up to 2 fixed bias Optional 1-Wire® Interface
Digital Outputs	Up to 2 optional open collector (150 mA)
Sensor Interface	Optional 1-wire bus
Analog Inputs	1 internal VCC monitor
Status LEDs	GPS and cellular

## Certifications

Fully certified FCC, CE, IC, CDG Applicable Carriers

## Electrical

Operating Voltage	9-32 VDC (Start-up, Operating) 7-32 VDC (Momentary)
Power Consumption	<2mA @ 12V (deep sleep) <20mA @ 12V (radio-active) <60mA @ 12V (continuous transmit)
Back Up Battery (Optional)	Lithium-Ion 200mAh or 1000mAh (See technical specification online for operational changes)

## Environmental

Temperature	-30° to +70° C (connected to primary power) -40° to +80° C (storage)
Humidity	95%RH @ 50° C non-condensing
Shock and Vibration	U.S. Military Standards 202G and 810F, SAE J1455
EMC/EMI:	SAE J1113; FCC-Part 15B; Industry Canada
RoHS Compliant	

## Physical

Dimensions	1.84 x 3.3 x 0.78", 46.5 x 83.6 x 19.4mm (without harness)
Weight	3.1 oz / 87 g (with harness)

## Connectors, SIM Access

Connection Type	Captive wire harness in 2 wire, 4 wire, 6 wire, and 8 wire configurations
-----------------	--

## Mounting

Standard tie-wrap or adhesive

## Key Features

- SMS-based messaging
- Internal GSM and GPS antennas
- Optional internal back-up battery
- Ultra-low power sleep mode (<2mA)
- Optional 3-axis accelerometer for motion sense and tilt
- Up to 2 inputs and 2 outputs
- Voltage monitoring and low battery notification
- 2,000 buffered messages
- 10 Built-in geo-fences
- Automatic, Over-The-Air Unit Configuration on Power-up (PULS™)
- Over-The-Air Firmware Download (PULS™)
- Web-Based Device Management (PULS™)

## Optical Features/Functions

Starter interrupt harness  
OBDII easy install harness

## Development Support Options

Customized hardware and software development available on request

## About CalAmp

CalAmp (NASDAQ: CAMP) is a telematics pioneer leading transformation in a global connected economy. We help reinvent businesses and improve lives around the globe with technology solutions that streamline complex IoT deployments and bring intelligence to the edge. Our software applications, scalable cloud services, and intelligent devices collect and assess business-critical data from mobile assets, cargo, companies, cities and people. We call this The New How, powering autonomous IoT interaction, facilitating efficient decision making, optimizing resource utilization, and improving road safety. CalAmp is headquartered in Irvine, California and has been publicly traded since 1983. Lojack is a wholly owned subsidiary of CalAmp. For more information, visit [calamp.com](http://calamp.com), or LinkedIn, Twitter, YouTube or CalAmp Blog.

© 2017 CalAmp. All specifications are typical and subject to change without notice.  
p/n 0114-200CDMA rev 20170927

Cal/Amp®

CalAmp  
15635 Alton Parkway, Ste 250  
Irvine, CA 92618  
Tel: 949.600.5600  
[calamp.com](http://calamp.com)