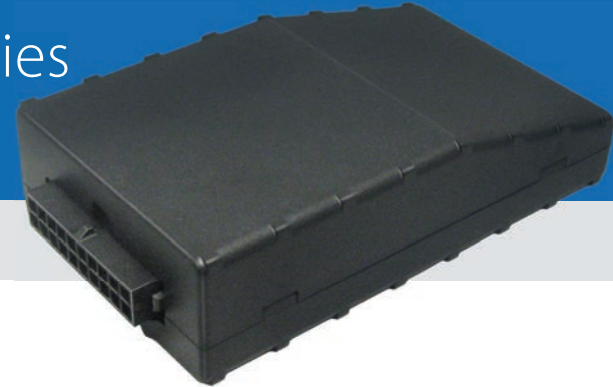




## LMU-1200™ GPRS/CDMA/HSPA Series

Economical Battery Backup GPS Tracking Unit



### EXPERIENCE THE ADVANTAGE

- Economical and flexible device
- Superior GPS & cellular quality
- Built-in battery backup
- Built-in or external cellular and GPS antenna for easy installation
- Built-in 3 direction motion sense and tilt alerting
- Low power sleep modes
- Over-the-air update capability for configuration and firmware
- Internal and external antenna configurations

The LMU-1200 is a full-featured vehicle tracking product designed for easy and reliable installation in automobiles. The LMU-1200 is an ideal solution for basic fleet, automotive insurance, stolen vehicle, vehicle finance, auto rental and other vehicle tracking applications when internal back-up battery is required.

### COMPETITIVE PRICE, COMPETITIVE TECHNOLOGY, COMPETITIVE EDGE

The LMU-1200 high-value tracking unit from CalAmp features a small size, superior GPS performance, an internal 1000 mAh back-up battery, 3-axis accelerometer for motion and tilt sense, ultra low sleep modes, and four Inputs/Outputs (I/O). The LMU-1200 is a complete vehicle tracking and communications device incorporating next-generation, super-sensitive GPS technology on GSM/GPRS cellular networks for installation in any 12 or 24 volt mobile vehicle. Superior internal antennas for both cellular and GPS eliminate the need for wired antennas and make the LMU-1200 mountable virtually anywhere in the vehicle for easy, inexpensive installations. Messages are transported across the GSM/GPRS network using enhanced SMS or UDP messaging providing a reliable communications link between the device and your application servers. The LMU-1200 is designed to dramatically reduce cost, power and size while providing excellent field reliability.

### FLEXIBILITY

The LMU-1200 employs CalAmp's advanced industry leading on-board alert engine, PEG™ (Programmable Event Generator) to monitor external conditions and support customer-defined exception-based rules to meet your application requirements. PEG monitors the vehicle environment and responds instantaneously to pre-defined threshold conditions related to time, date, motion, location, geo-zone, input and other event combinations. This behavior can be programmed by CalAmp before shipment, at a customer's facility, or over-the-air once the unit has been fielded.

### OVER-THE-AIR SERVICEABILITY

The LMU-1200 leverages CalAmp's management and maintenance system, PULS™ (Programming, Updates, and Logistics System), for over-the-air configuration parameters, PEG rules, and firmware. This out-of-the-box hands free configuration and automatic post-installation upgrades can monitor unit health status across your customers' fleets to identify issues before they become expensive problems.

# LMU-1200 SPECIFICATIONS

## GENERAL

Communication Modes	GPRS/EDGE/HSPA and CDMA 1xRTT Packet data, UDP and SMS
Location Technology	50 channel GPS
Operating Voltage	12 and 24 volt vehicle systems

## GPS

Location Technology	50 channel GPS (with SBAS) SBAS: WAAS, EGNOS, MSAS, GAGAN
Location Accuracy	2.0 meter CEP (with SBAS)
Tracking Sensitivity	-162dBm
Acquisition Sensitivity	-147dBm
AGPS Capable	

## CELLULAR

Data Support	SMS, GPRS, CDMA 1xRTT or HSPA packet data	
Operating Bands (MHz)		
GSM/GPRS	850/900/1800/1900	
CDMA/1XRTT	850/1800	
HSPA/UMTS	800(VI)/850(V)/900(VIII)/ 1700(IV)/1900(II)/2100(I)	
Transmitter Power		
GSM/GPRS	850/900	32.5 dBm
	1800/1900	29.3 dBm
CDMA/1XRTT	850	24 dBm
	1800	23 dBm
HSPA/UMTS	(all bands)	23 dBm
HSPA data rates	5.6 Mbps upload/7.2 Mbps download	
HSPA Fallback	EDGE/GPRS/GSM quad band EDGE MCS1-MCS9 3GPP Release 6	

## COMPREHENSIVE I/O

Digital Inputs	1 fixed bias/ programmable bias
Digital Outputs	4 open collector (150 mA)
Analog Inputs	1 external ADC / 1 internal VCC monitor
Status LEDs	GPS and cellular

## ENVIRONMENTAL

Temperature	-30° to +75° C (operating) -40° to +85° C (storage)
Humidity	95%RH @ 50° C non-condensing
Shock and Vibration	U.S. Military Standards 202G and 810F, SAE J1455
EMC/EMI	SAE J1113; FCC-Part 15B; Industry Canada
RoHS Compliant	

## About CalAmp

CalAmp Corp. (NASDAQ: CAMP) is a proven leader in providing wireless communications solutions to a broad array of vertical market applications and customers. CalAmp's extensive portfolio of intelligent communications devices, robust and scalable cloud service platform, and targeted software applications streamline otherwise complex machine-to-machine (M2M) deployments. These solutions enable customers to optimize their operations by collecting, monitoring and efficiently reporting business critical data and desired intelligence from high-value remote assets. For more information, please visit [www.calamp.com](http://www.calamp.com).

## ELECTRICAL

Operating Voltage	6-32 VDC
Power Consumption	2 mA @ 12V (deep sleep ) 10 mA @ 12V (sleep on network) 70 mA @ 12V (active standby)

## PHYSICAL

Dimensions	2.125 x 3.5 x 0.93", (54 x 89 x 24mm)
Weight	2.9 oz, (82g)

## CONNECTORS, SIM ACCESS

SIM Access	Internal
External GPS	SMA (with tamper monitoring, 3V)
External Cellular	SMC
Connection Type	20 pin Molex-type fused power harness

## CERTIFICATIONS

Fully certified FCC, CE, IC, PTCRB, Applicable Carriers

## MOUNTING

Standard tie-wrap or adhesive; Screw mount bracket

## KEY FEATURES

- GPRS/EDGE/HSPA and CDMA 1xRTT packet data, UDP and SMS
- Internal or external cellular and GPS antennas
- Super sensitive GPS (-162 dBm)
- Internal back-up 700mAh battery
- Ultra-low power sleep mode (<2mA)
- 3-axis accelerometer for motion sense and tilt
- 4 inputs and 4 outputs
- Voltage monitoring and low battery notification
- 2,000 buffered messages
- 10 Built-in geo-fences
- PEG™ Exception-Based Rules
- Automatic, Over-The-Air Unit Configuration on Power-up (PULS™)
- Over-The-Air Firmware Download (PULS™)
- Web-Based Device Management (PULS™)

## OPTIONAL FEATURES/FUNCTIONS

- Starter interrupt harness
- OBDII easy install harness
- External GPS and cellular antennas
- Internal GPS and cellular antennas
- External backup battery
- Serial cable

## DEVELOPMENT SUPPORT OPTIONS

- Custom hardware and software development available

## CalAmp Corp.

1401 N. Rice Avenue, Oxnard, CA 93030  
T: 805.987.9000 | F: 805.987.8359  
[www.calamp.com](http://www.calamp.com)

© 2013 CalAmp. PN: 000-0006-120 Rev 3

All specifications are typical and subject to change without notice

